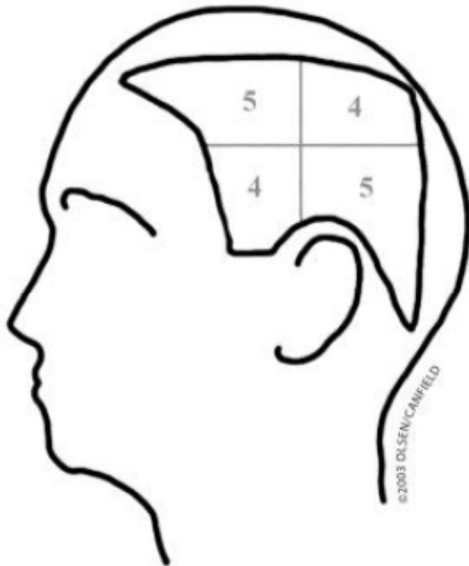


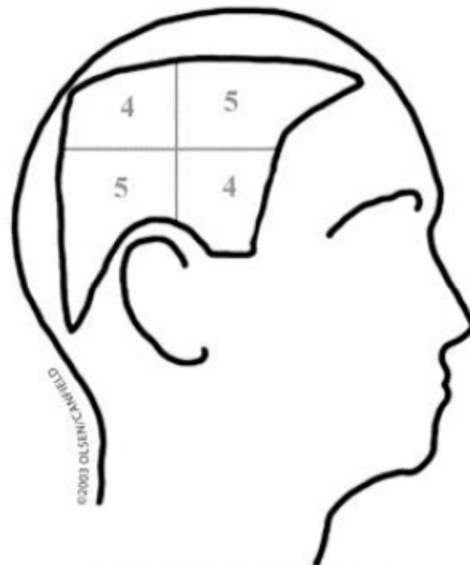
SALT I

Alopecia cuero cabelludo (solo pelo terminal):

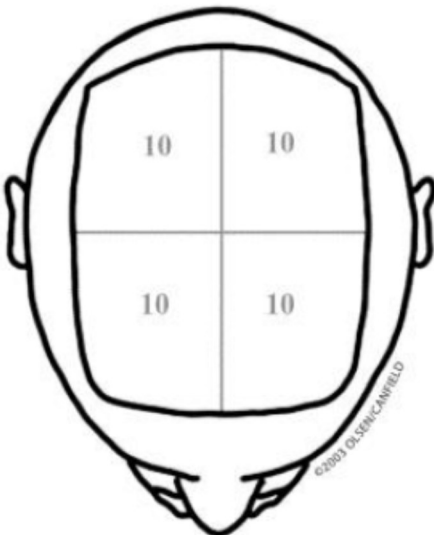
- S0: sin alopecia
- S1: 1-24% alopecia
- S2: 25-49% alopecia
- S3: 50-74% alopecia
- S4: 75-99% alopecia
 - S4A: 75-90% alopecia
 - S4B: 91-99% alopecia
- S5: 100% alopecia



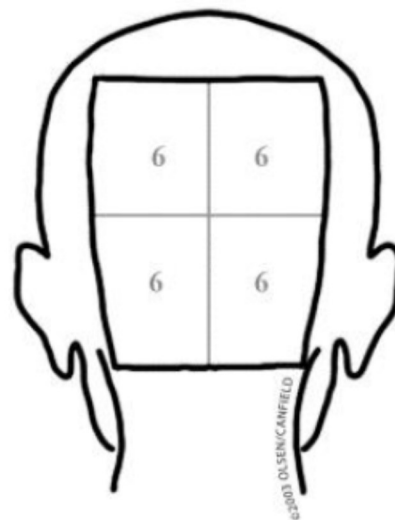
LEFT SIDE: 18%



RIGHT SIDE: 18%



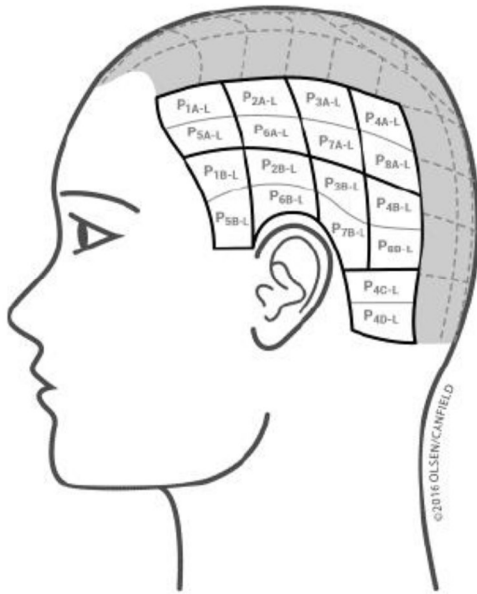
TOP: 40%



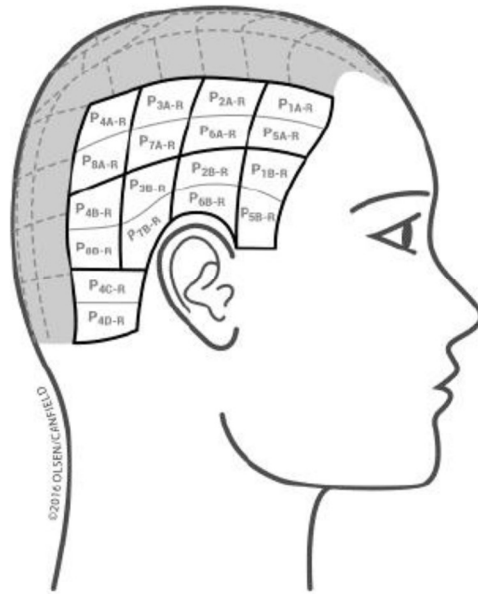
BACK: 24%

El porcentaje de alopecia en regiones interparietales se multiplica por 40/100 (A), el porcentaje de alopecia en región occipital se multiplica por 24/100 (B), el porcentaje de alopecia en región parietal izquierda se multiplica por 18/100 (C), el porcentaje de alopecia en región parietal derecha se multiplica por 18/100 (D). $A + B + C + D = \text{SALT score}$.

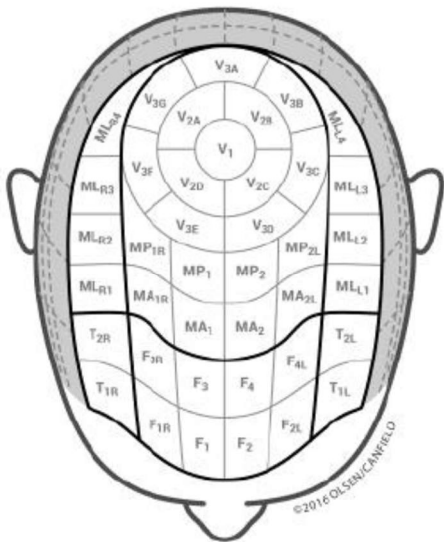
SALT II



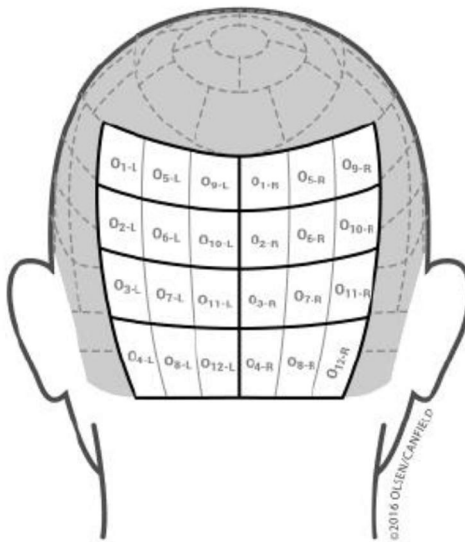
LEFT SIDE: 18%



RIGHT SIDE: 18%



TOP: 40%



BACK: 24%